

**Service Kit**

**FAA-DER APPROVED**

**Service Instructions SK-206EC-2**

**Subject:** Installation of Temperature Control and High Output Rear Evaporator Blower Assembly.

**Date:** November, 28, 1995. **Appl:** NS

**Applicability:** Bell Models: 206 L4; S/N \_\_\_\_\_ equipped with the ACC cabin air conditioning system-R134A refrigerant.

**Reference:**

1. Drawing Nos. : 206EC-838 Installation, Electrical System 206L  
206EC-544 Installation, 206L Series HFC- Plumbing

**Compliance:** Optional, at the discretion of the operator.

**Purpose:** To add temperature control and increase cooling effectiveness.

**Discussion:** The purpose of this kit is to upgrade existing ACC air conditioning systems by the addition of a temperature control and a high output rear evaporator blower. ES26112-2 Solenoid Valve has replaced the ES26101-5 Bypass Valve. S-5012EC-3 & S-5012EC-10 Tube Assys have replaced S-5008EC-T14 & S5008EC-T19 Tube Assys. ES57170-2 Thermostat Switch is installed to adjust air conditioner temperature. S-6078EC-13 Blower Assy replaces the existing aft evaporator blower.

**Bill of Materials:**

Description	Qty.	Part Number
Assy, Tube	1	S-5012EC-10
Assy, Tube	1	S-5012EC-3
Valve	1	ES26112-2
Brkt, Valve- Support	1	S-5508EC-1

JUL 07 2004

.....

Description	Qty.	Part Number
Screw	2	MS35275-240
Label	1	S-2506EC-5
Clamp	1	MS21919WH-4
Clamp	1	MS21919WH-6
Clamp	2	MS21919WH-8
Screw	2	AN525-10R8
Washer	4	AN960-10L
Nut	4	MS21042L3
Bracket, Clamp Support	1	S-9280EC-4
Switch, Thermostat	1	ES57170-2
Clamp	2	MS21919WH-2
Mount	3	TC5344A
Tywrap	4	CT7B
Support, Temp Control Switch	1	S-6092EC-1
Placard	1	S-2500EC-47
Knob	1	ES39296-1
Screw	2	MS24693-S-27
Screw	4	MS24693-S-271
Placard	1	S-2500EC-46
Relay	1	W389DCX-13
Ckt Breaker (Alt: W23X1A1G-30)	1	MS14105-30
Placard	1	S-2500EC-27
Wire	48"	Mil-W-22758/41-10
Wire	264	Mil-W-22758/41-12
Wire	36"	Mil-W-22758/41-14
Wire	72"	Mil-W-22758/41-20
Connector	1	320570
Terminal	5	KTN63 (Hi-Line)
Plug (Male)	1	03-09-2032
Pin	4	02-09-203
O-Ring No. 6	6	AIR440-840
O-Ring No. 8	6	AIR440-841
ICI Polyester Oil	2 OZ.	RL100S
Terminal	2	35108
Terminal	1	36160
Terminal (T&B)(Red)	4	RA18-250F
Terminal (T&B)(Blue)	4	RB14-250F
Assy, Blower	1	S-6078EC-13

**Installation Instructions:**

1. Reclaim all refrigerant that is currently in the system by using an appropriate refrigerant recovery / recycle machine.
2. Verify existing electrical system is working properly.
  - A. When air conditioning switch is moved from off to:  
A/C- The blowers turn on and the clutch on the compressor engages.
  - B. Confirm the blower switch high and low positions are working correctly. Individually switch the blowers from high speed to low speed and confirm each blower has higher air output in the high position.
3. Remove aft evaporator blower.
4. Remove existing W389CX-8 relay which controls the aft evap blower located on relay panel above baggage compartment.
5. Install new aft evap blower: Locate in same general position as previous blower. Some modification to location may be required due to larger size of blower motor. Mark and match drill holes for mounting screws.
6. Install new aft blower relay (W389CX-13) on existing relay panel (fig.1). Wire relay as shown (fig.2).
7. Replace existing wires as shown on the electrical schematic (fig.2) with larger gauge wire supplied.
8. Connect blower and confirm operation in both high and low positions
9. Install relay (W389CX-8) removed from the aft evap position in the spare location on the relay panel. Attach S-2500EC-46 placard as shown (fig.1). This becomes the temp control relay location.
10. Wire the temp control relay as shown (fig.6) using wire supplied.
11. Install ES57170-2 Thermostat Switch with S-6092EC-1 Support as shown (fig.3).
12. Position capillary tube of thermostat switch as shown using hardware supplied (fig.4).

JUL 07 2004

Am'd.....

13. Remove and discard S-5008EC-T14, S-5008EC-T19 Tube Assys and ES-26101-5 Valve and replace with S-5012EC-3, S-5012EC-10 Tube Assys and ES26112-2 Valve and S-5508EC-1 Support Brkt. (fig.5). Use ICI Polyester oil to lubricate #6 & #8 o-ring prior to assembly.
17. System is now ready to be evacuated and recharged in accordance with System Service Manual.

### **Weight and Balance**

New Blower Assy (S-6078-11) weighs 4.4 lbs. more than existing blower that is to be removed.

<b><u>Weight</u></b>	<b><u>Arm</u></b>	<b><u>Moment</u></b>
+4.4 lbs.	187.3	+808.3

### **Service Instructions**

This document is intended to be a supplement to the original AC system service manual and must be maintained with the aircraft maintenance documents.

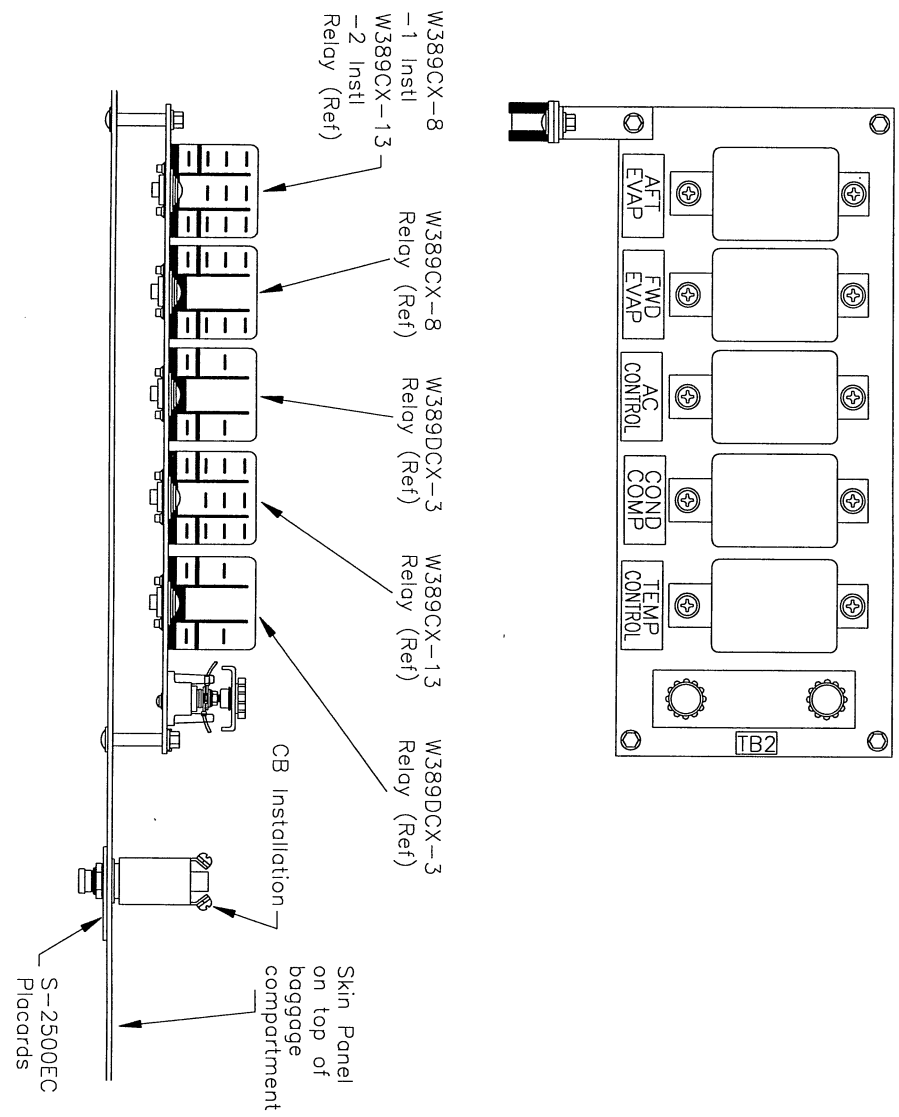
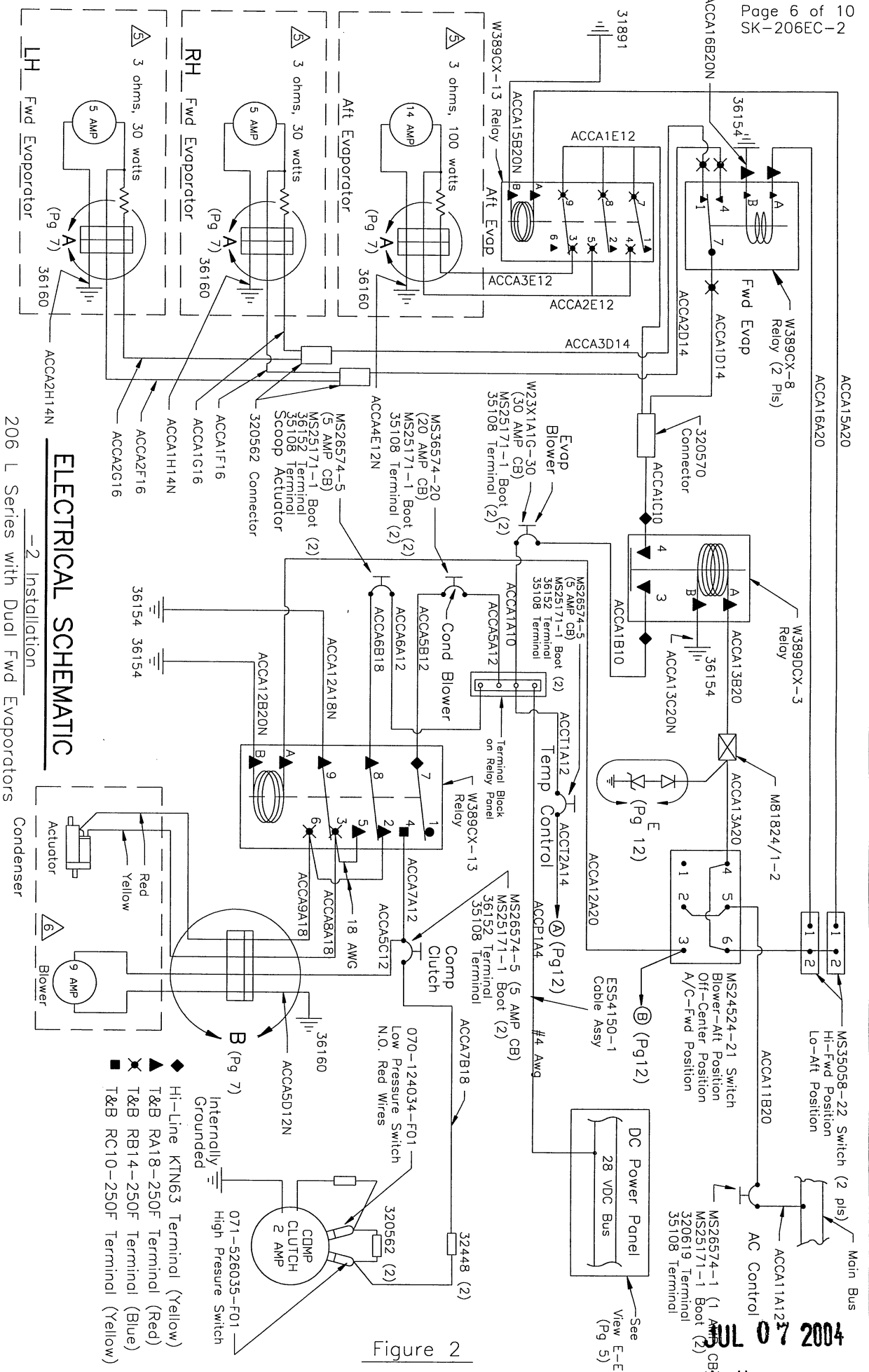


Figure 1

JUL 07 2004

Ans'd.....



# ELECTRICAL SCHEMATIC

206 L Series with Dual Fwd Evaporators  
-2 Installation

Figure 2

- ◆ Hi-Line KTN63 Terminal (Yellow)
- ▲ T&B RA18-250F Terminal (Red)
- T&B RB14-250F Terminal (Blue)
- T&B RC10-250F Terminal (Yellow)

JUL 07 2004

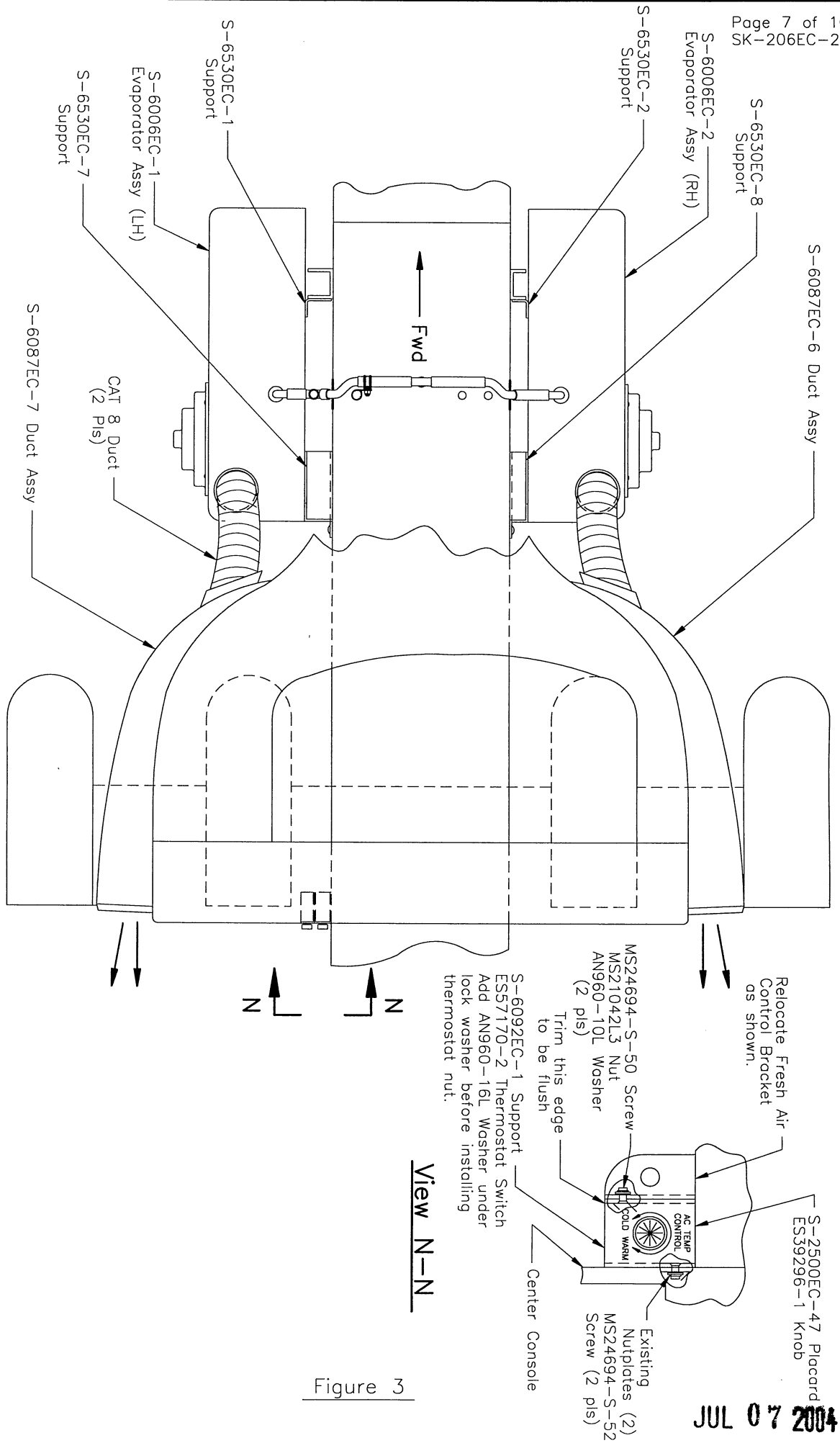


Figure 3

JUL 07 2004

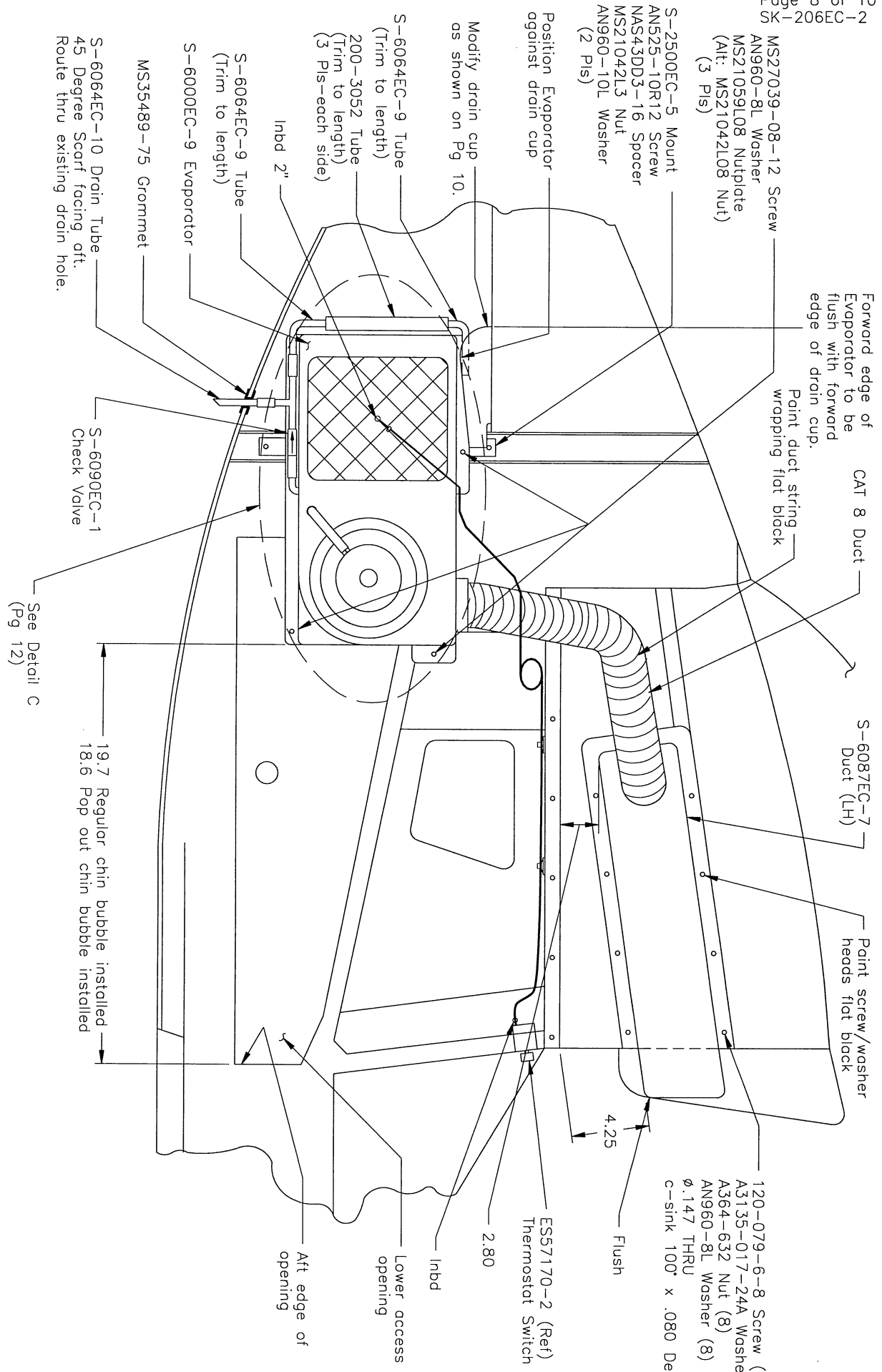


Figure 4

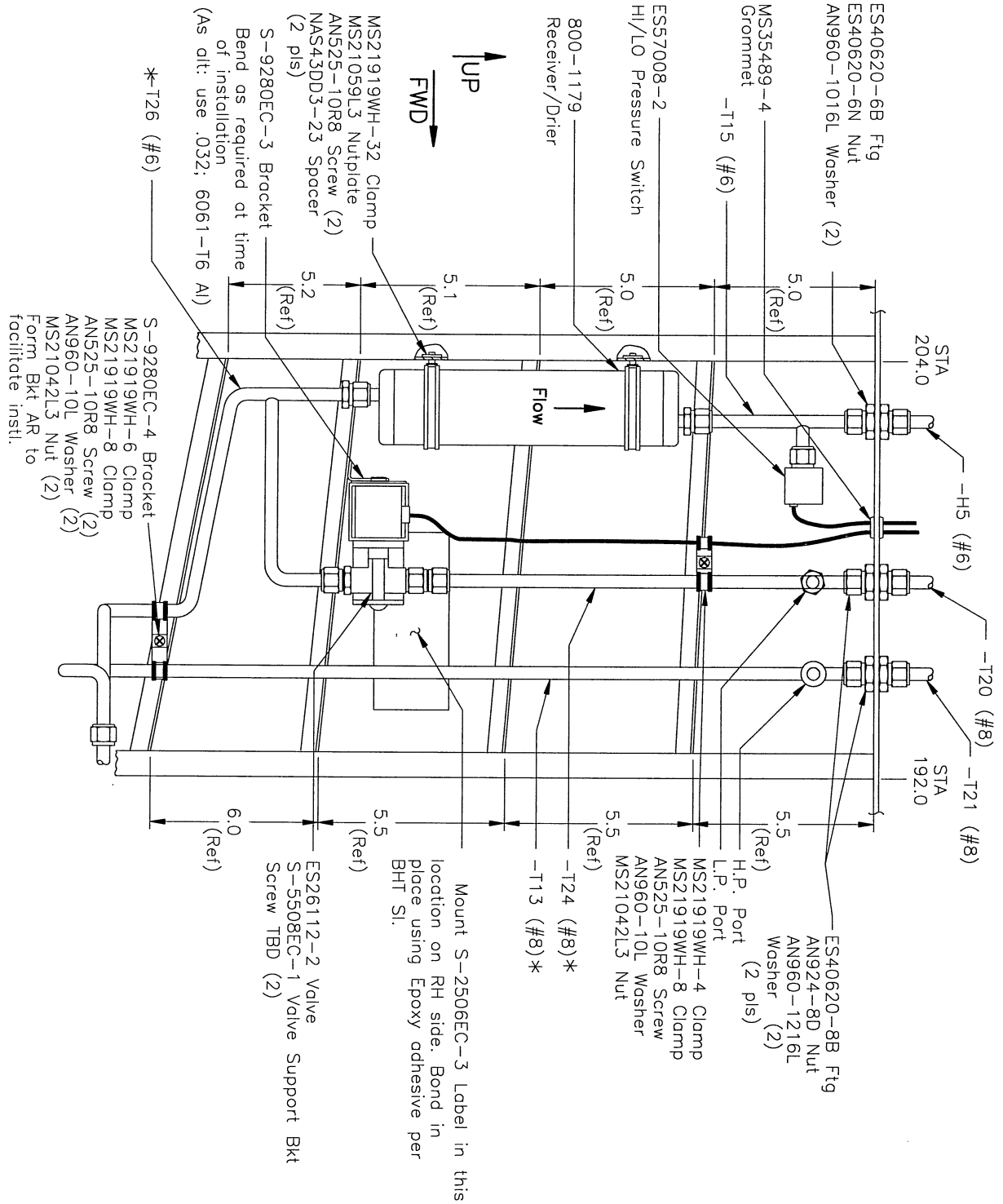


Figure 5

