

Service Letter

Title: SL-374 Bell 412 Compressor Drive Pulley Belt Guard Change

Date: December 6, 2016

Applicability: Bell Helicopter 412 Aircraft equipped with the Air Comm Air Conditioning System, all serial numbers. The system serial number is marked on the compressor mount.

Reference: FAA STC # SR00066DE

Compliance: Recommended inspection within 20 flight hours, recurring re-inspection each 25 flight hr period per the current ICA "412AC-208M_Rev14".

A. Discussion:

An operator has reported finding a severed compressor drive belt and belt guard that was dislodged and damaged. The issue was believed to have been due to the belt guard fasteners loosening, allowing the guard to dislodge and contact the drive belt. This service bulletin provides information to ensure the security of the belt guard fasteners.

B. Replacement:

If inspection of the belt guard indicates missing fasteners or damage to the belt guard, replacement hardware can be obtained from the Air Comm Corporation Service Department. Please contact us at: Phone 303-440-4075, Fax 303-440-6355, or E-mail service@aircommcorp.com

C. Approval:

This bulletin is based on previously FAA-approved data.

D. Weight & Balance:

No change to aircraft weight & balance.

Revision	Issue Date	Inserted By	Approved by	Description of Changes
NC	10/13/16	JMB	BD	Initial Release
A	11/22/16	JMB	KM	Edited Compliance statement to include recurring inspection info.
B	11/29/16	JMB	KM	Sh 3: Added ref. original torque values to step 2.
C	12/06/16	JMB	<i>KM</i>	Sh 3: screw torque value was 60-65 in-lb, changed to 35-40 in-lb to align w/Bell standards

E. Rework Procedure:

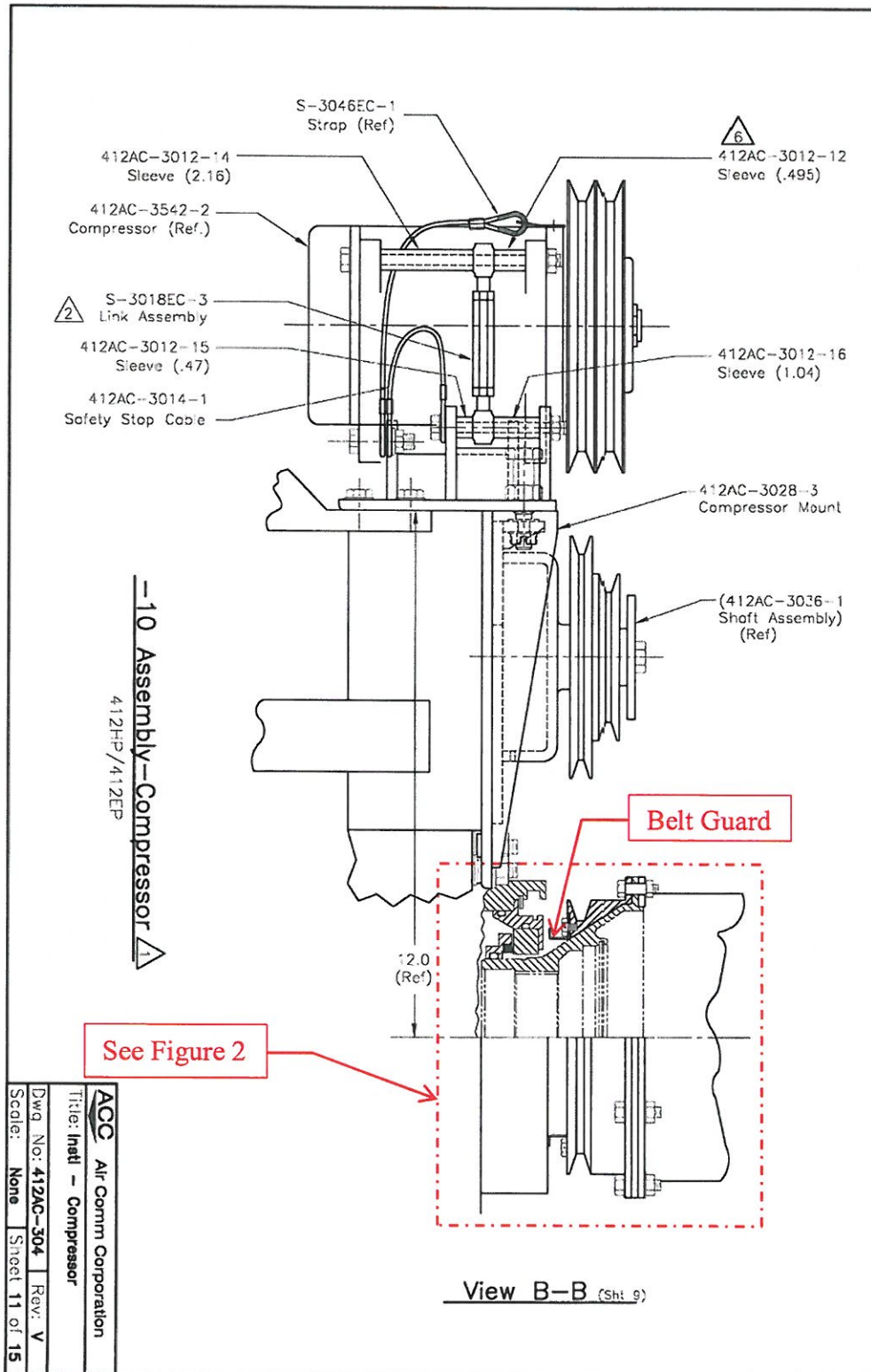


Figure 1. Compressor Drive Installation View

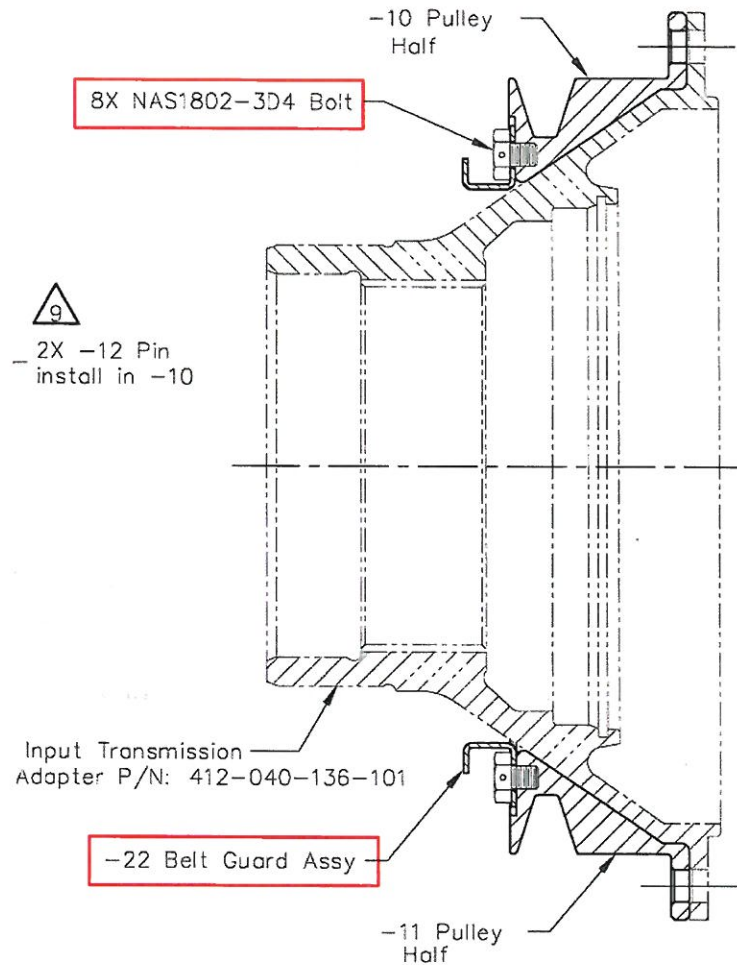


Figure 2. Drive Belt Guard Installation Details

- 1) Referring to Figures 1 & 2 above, ensure that the lock wire and NAS1802 screws securing the belt guard to the pulley are all in place.
- 2) If any anomalies are found, remove the lockwire and torque the 8 screws to 35-40 in-lb. Note that per the 412AC-304 Compressor Installation drawing the torques had been specified to be 12-15 in-lb.
- 3) Re-install lockwire MS20995C-32 per QQ-W-423B Cond. A